

**ANDOVER HEBRON MARLBOROUGH YOUTH & FAMILY SERVICES AND THE TOWN OF HEBRON,
FURNACE CONVERSION PROJECT
RFP # 2023-1**

ADDENDUM # 1 – Issued January 17, 2023

This Addendum consists of 10 pages."

1. Additions to the RFP

A. None

.....

2. Deletions from the RFP

A. AHM will work with their existing Fire Alarm company to update CO2 sensors as required by the Town of Hebron Building Department.

.....

3. Changes to the RFP

A. Alternate Bid Item No. 1: Building Automation System (BAS)

1) Section 23 0900 HVAC Instrumentation & Controls is moved to Alternate Bid item No. 1.

Price \$ _____

B. Change, Drawing M-2: The electrical unit heater schedule has been changed to utilize the available existing electrical circuit in MER. The available circuit is 120 volt / 30 amp (after removal of boilers).

C. Proposed electric domestic water heater size is 20 gallons.

1) Contactor must obtain new feeder/breaker from existing electrical panels in electrical room. Electrical room location indicated on attached original drawing, dated, 10/14/02, M-1.

D. Correction: There are three existing units that require new thermostat/control not one. See attached plans.

1) A21: Split system in interior closet off of corner office, serving first floor, propane fired furnace.

2) A22: Split system in attic, serving second floor, propane fired furnace. Attic access from hallway ceiling hatch.

3) M-1: Split system in attic, serving entrance and reception, heat pump. Attic access from storage room ceiling hatch.

.....

4. Questions From other Entities and AHM's Answers

Q1: I see the project is tax exempt but are the fees waived?

A1: The Town of Hebron will be waiving permit fees.

Q2: What is the estimated start & finish date?

A2: AHM is expecting that the work will occur in the spring of 2023 between the heating and cooling seasons. All work is expected to be completed within 30 days.

Q3: What is the estimated value/budget for this project?

A3: The total project cost is estimated to be between \$50,000 and \$100,000. Award of bid shall be made to the lowest responsible bidder.

.....

5. Other Items

A. Q. Billing to AHM or Town of Hebron –

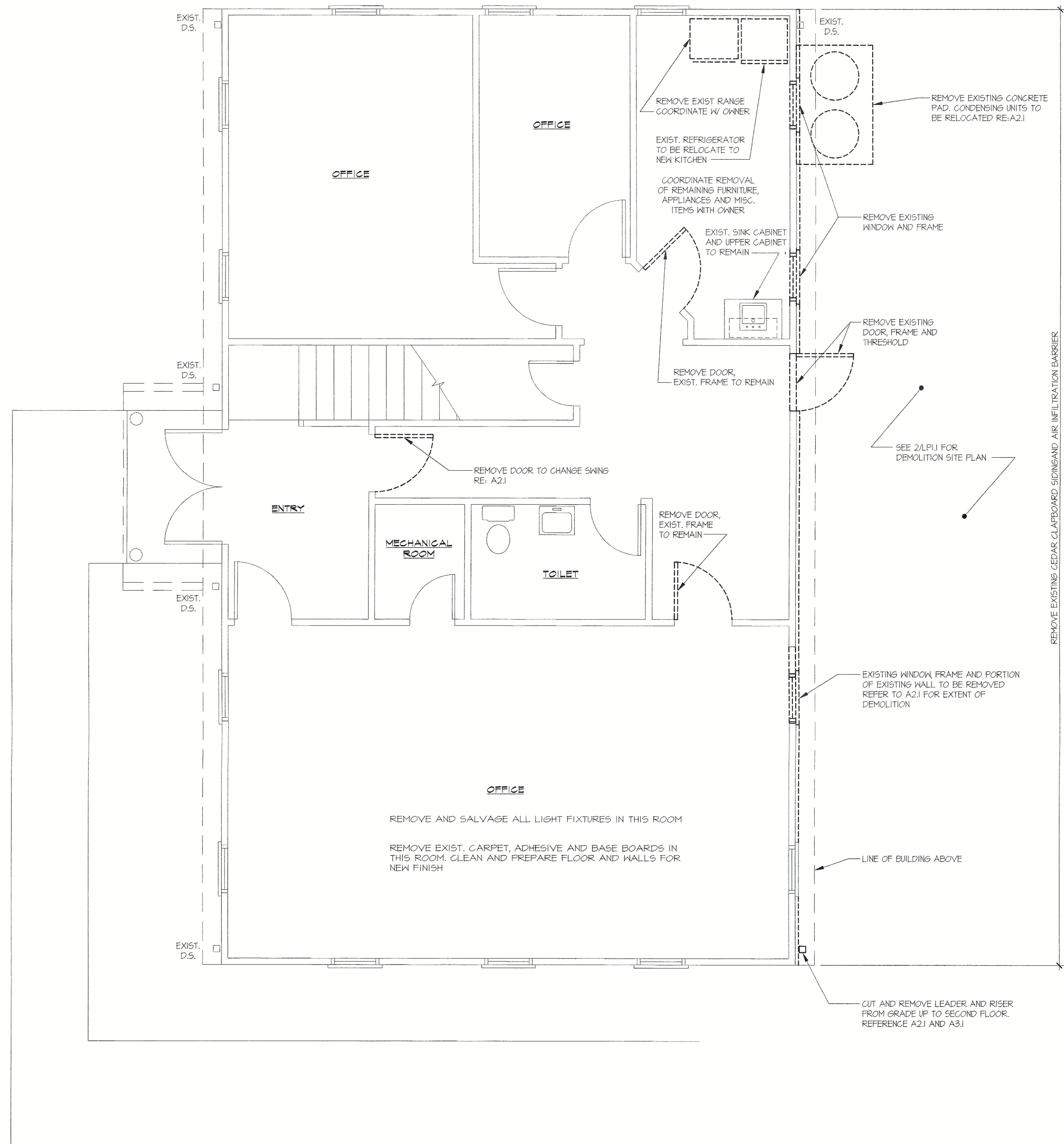
A. Answer to billing must be reviewed by the federal government. Question has been submitted and the answer will be provided in the Addendum #2

B. Original Building Drawings have been included for Contractor reference.

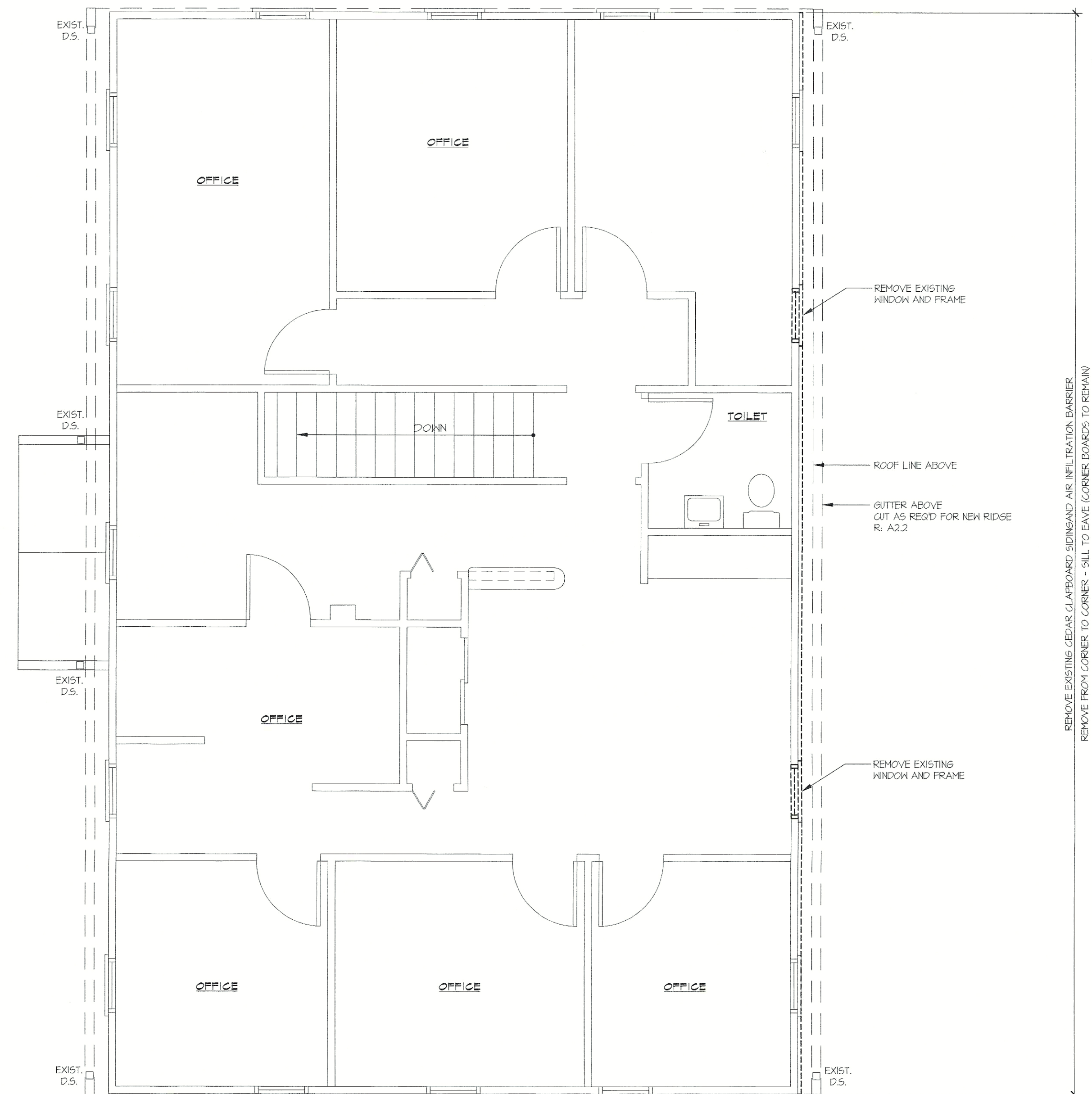
.....

End of Addendum No.1.

ATTACHMENTS TO FOLLOW:



1 FIRST FLOOR DEMOLITION PLAN
1/4" = 1'-0"



2 SECOND FLOOR DEMOLITION PLAN
1/4" = 1'-0"

LEGEND	
-----	ITEMS TO BE REMOVED
=====	ITEMS TO REMAIN

GENERAL DEMOLITION NOTES	
1.	THE CONTRACTOR SHALL BE RESPONSIBLE TO PATCH & REPAIR ALL EXISTING WORK DISTURBED OR OTHERWISE IN NEED OF PATCHING & REPAIRS IN ORDER TO MAKE THE PROJECT A COMPLETE AND FINISHED PRODUCT. THIS PATCH & REPAIR INCLUDES ALL FINISHES NEEDED TO MATCH ADJACENT SURFACES.
2.	DOORS AND WINDOWS SHOWN DOTTED ARE TO BE REMOVED INCLUDING FRAME & HARDWARE, UNLESS OTHERWISE NOTED. DISPOSAL OF THESE ITEMS TO BE DETERMINED AND COORDINATE WITH OWNER.
3.	ALL ITEMS SCHEDULED TO BE SALVAGED FOR REUSE SHALL BE REMOVED WITH CARE, STORED AND PROTECTED FROM DAMAGE UNTIL SALVAGED ITEMS ARE INCORPORATED IN THE WORK. IT SHALL BE THE CONTRACTOR'S RESPONSIBILITY TO REPLACE AND/OR RESTORE ANY ITEMS SCHEDULED FOR SALVAGE AND REUSE THAT ARE DAMAGED DURING THE COURSE OF CONTRACT OPERATIONS. THE OWNER AND ARCHITECT SHALL BE THE SOLE JUDGE OF SUITABILITY OF THESE SALVAGED ITEMS FOR REUSE IN THE WORK.
4.	CONTRACTOR IS RESPONSIBLE FOR SECURING AND PROTECTING THE EXIST. BUILDING FROM WEATHER CONDITIONS DURING ALL PHASES OF CONSTRUCTION.
5.	COORDINATE ALL DEMOLITION, SYSTEM SHUTDOWNS AND SERVICE INTERRUPTIONS WITH THE OWNER. PROVIDE 72-HOUR PRIOR NOTICE.
6.	PROVIDE DUST CONTAINMENT CONSTRUCTION BARRIERS DURING THE WORK. SECURITY AND SAFETY SHALL BE THE RESPONSIBILITY OF THE CONTRACTOR DURING THE TERM OF THE WORK.

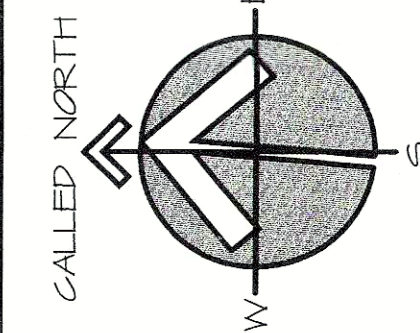
* REFERENCE INFO SHEET FOR ADDITIONAL DEMOLITION NOTES

NOTICE
This drawing is the property of Tecton Architects | pc. The use, reproduction or distribution of this drawing for any purpose whatsoever without the expressed written agreement between Tecton Architects | pc and the user is prohibited. Rights to use the information on this sheet are not transferred until payment has been received for services rendered. Any rights so granted are non-transferable to other parties without the prior expressed written consent of Tecton Architects | pc.

© 2002 Tecton Architects | pc

job progress

FILE NAME: A2-1-Heb06Ar.dwg
REF NAME: Z-HEB06AR-A.dwg
REF NAME:
REF NAME:



AHM YOUTH SERVICES, INC
25 PENDELTON DRIVE
HEBRON, CT 06248



DEMOLITION PLANS
AHM BUILDING ADDITION
25 PENDELTON DRIVE
HEBRON, CONNECTICUT

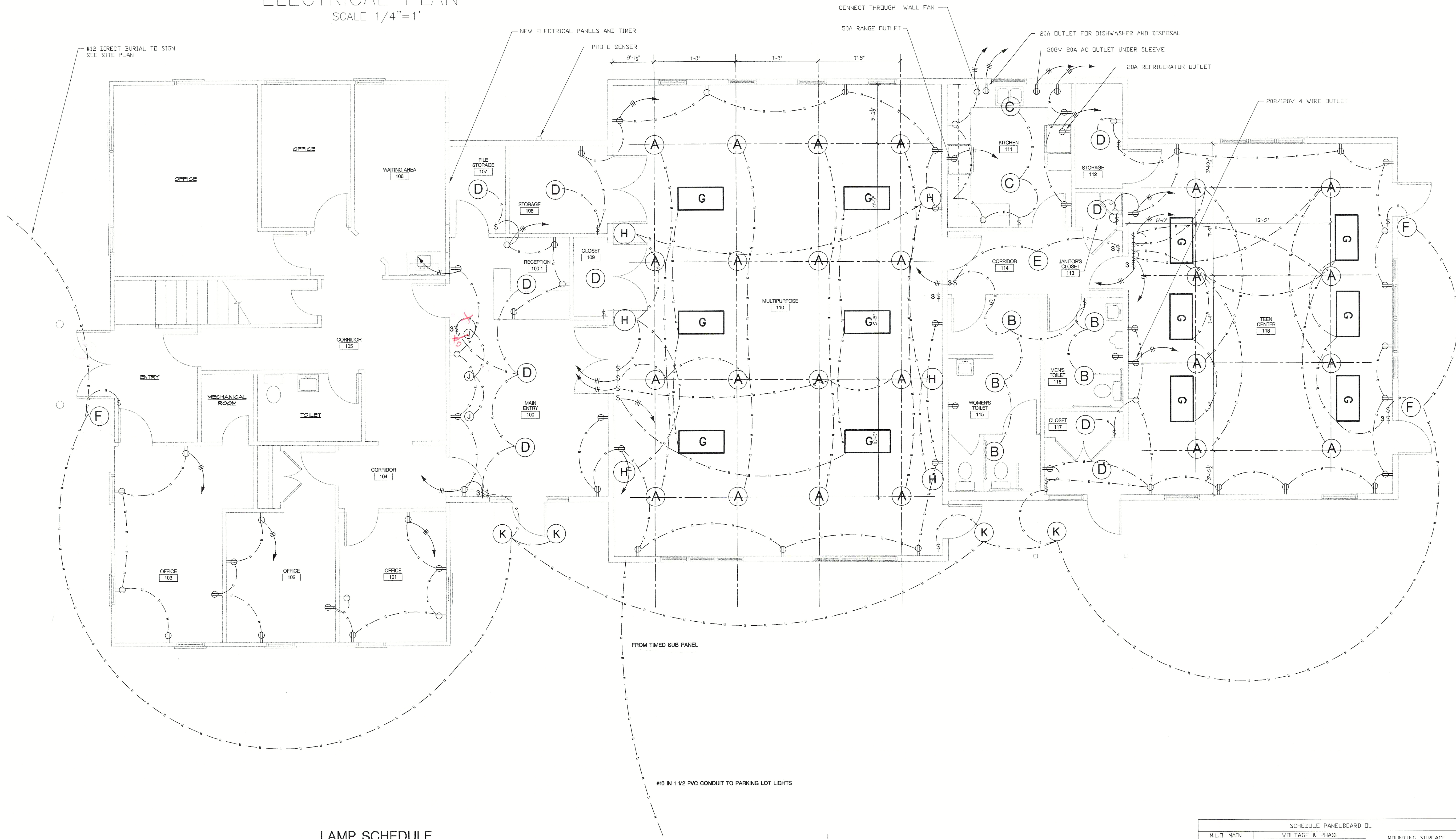
issue date 10/14/02
scale AS NOTED
job no. HEB-06-AR
sheet no.

A11



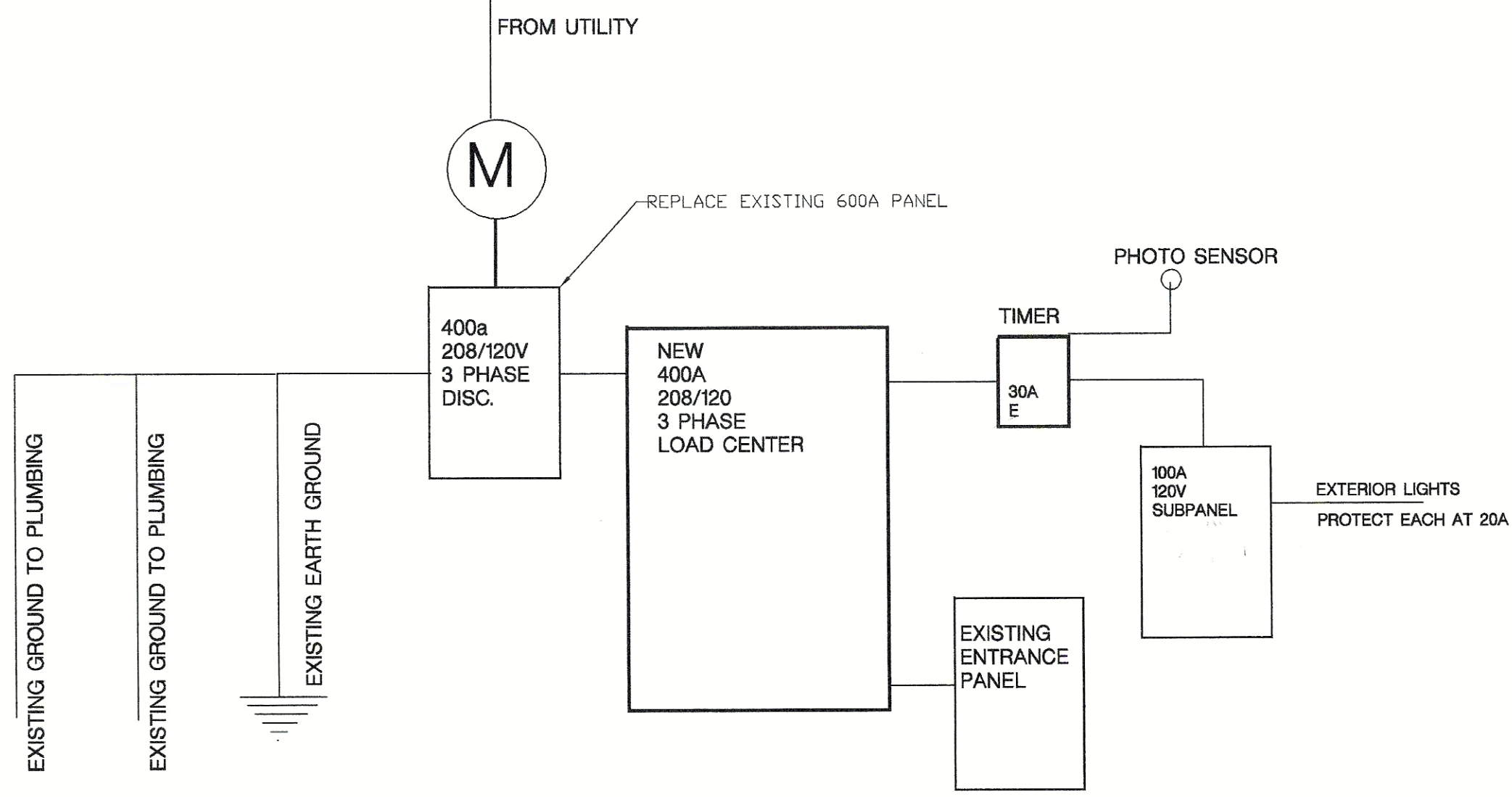
A2.2

ELECTRICAL PLAN
SCALE 1/4"=1'



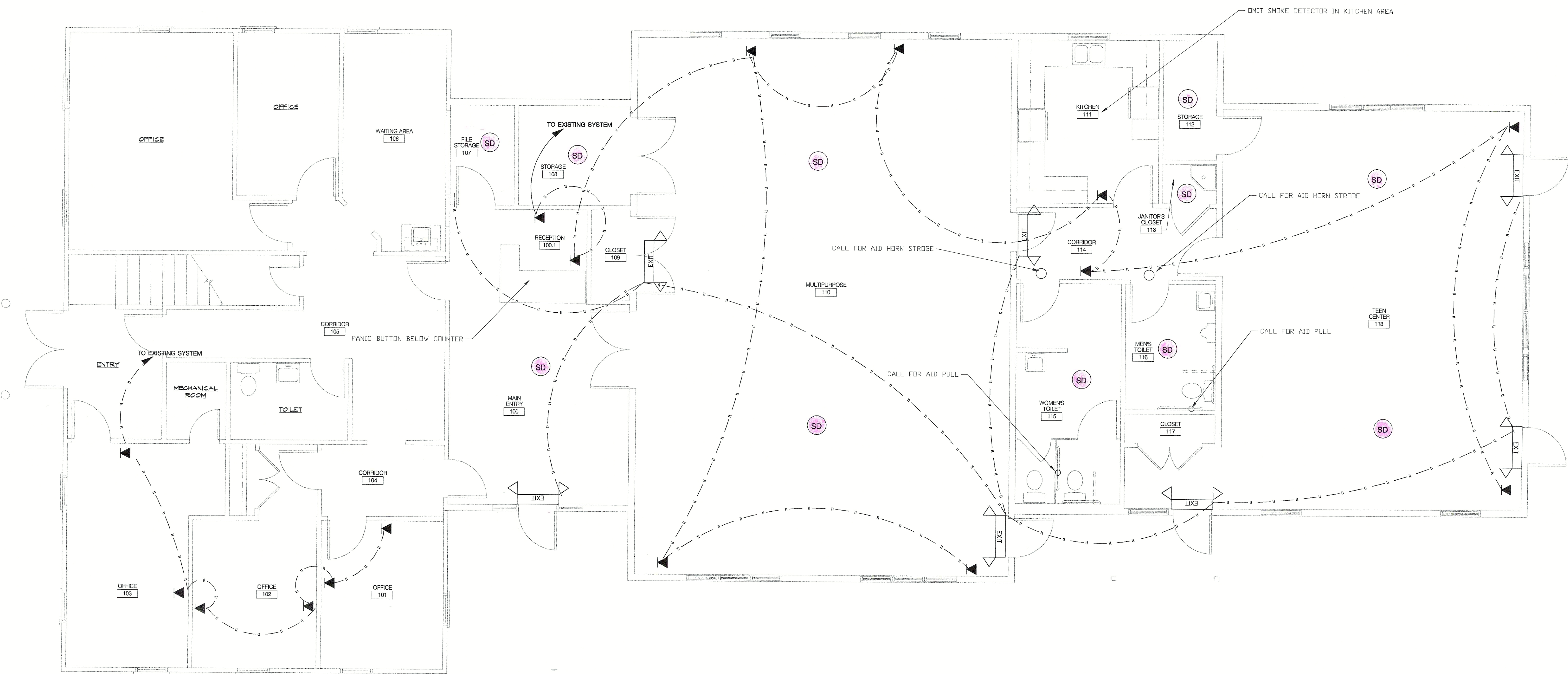
LAMP SCHEDULE

- (A) DAY-BRITE RP 175M 12 E9A22
- (B) DAY-BRITE 283P24016120
- (C) THOMAS SL759-8
- (D) DAY-BRITE CARAVEL CAW240120
- (E) DAY-BRITE CARAVEL CAW240120
- (F) GE OWL05S1NWLGBL
- (G) DAY-BRITE 2DG340TF56120
- (H) Q-SPHERE CB3616
- (J) CAPRI TRACK LIGHTING KT2220
- (K) OMEGA C4186



SCHEDULE PANELBOARD DL									
M.L.O. MAIN		VOLTAGE & PHASE			MOUNTING SURFACE				
CIRCUIT NO.	NO. POLES	TRIP RATING	A	B	C	WIRE SIZE	REMARKS		
1	3	100	100	100	100	1	EXISTING PANEL		
2	3	100	100	100	100	1	EXISTING PANEL		
3	3	80	80	80	80	4	HEAT PUMP #1		
4	3	80	80	80	80	4	HEAT PUMP #2		
5	3	80	80	80	80	4	HEAT PUMP #3		
6	3	30	30	30	30	10	HEAT PUMP #4		
7	3	30	30	30	30	10	HEAT PUMP #5		
8	3	30	30	30	30	10	HEAT PUMP #6		
9	3	30	30	30	30	10	HEAT PUMP #7		
10	3	20	20	20	20	10	HEAT PUMP #8		
11	3	20	20	20	20	10	HEAT PUMP #9		
12	3	20	20	20	20	10	HEAT PUMP #10		
13	2	20	20	20	20	10	KITCHEN AC		
14	2	20	20	20	20	10	KITCHEN AC		
15	2	30	30	30	30	10	HOT WATER HEATER		
16	2	30	30	30	30	10	HOT WATER HEATER		
17	2	50	50	50	50	8	KITCHEN RANGE		
18	2	50	50	50	50	8	KITCHEN RANGE		
19	2	30	30	30	30	10	TIMER		
20	2	30	30	30	30	12.5	LIGHTS AND OUTLETS		
21	1	20	12.5	12.5	12.5	12	LIGHTS AND OUTLETS		
22	1	20	12.5	12.5	12.5	12	LIGHTS AND OUTLETS		
23	1	20	12.5	12.5	12.5	12	LIGHTS AND OUTLETS		
24	1	20	12.5	12.5	12.5	12	LIGHTS AND OUTLETS		
25	1	20	12.5	12.5	12.5	12	LIGHTS AND OUTLETS		
26	1	20	12.5	12.5	12.5	12	LIGHTS AND OUTLETS		
27	1	20	12.5	12.5	12.5	12	LIGHTS AND OUTLETS		
28	1	20	12.5	12.5	12.5	12	LIGHTS AND OUTLETS		
29	1	20	12.5	12.5	12.5	12	LIGHTS AND OUTLETS		
30	1	20	12.5	12.5	12.5	12	LIGHTS AND OUTLETS		
31	1	20	12.5	12.5	12.5	12	LIGHTS AND OUTLETS		
32	1	20	12.5	12.5	12.5	12	LIGHTS AND OUTLETS		
33	1	20	12.5	12.5	12.5	12	LIGHTS AND OUTLETS		
34	1	20	12.5	12.5	12.5	12	LIGHTS AND OUTLETS		
35	1	20	12.5	12.5	12.5	12	LIGHTS AND OUTLETS		
36	1	20	12.5	12.5	12.5	12	LIGHTS AND OUTLETS		
37	1	20	12.5	12.5	12.5	12	LIGHTS AND OUTLETS		
38	1	20	12.5	12.5	12.5	12	LIGHTS AND OUTLETS		
39	1	20	12.5	12.5	12.5	12	LIGHTS AND OUTLETS		
40	1	20	12.5	12.5	12.5	12	LIGHTS AND OUTLETS		
41	1	20	12.5	12.5	12.5	12	EXIT SIGNS & EMERG		
42	1	20	12.5	12.5	12.5	12	EXIT SIGNS & EMERG		

SCALE 1/4"=1'



SD SMOKE DETECTORS

◀ COMBINATION TELEPHONE DATA OUTLET

DATA COMMUNICATIONS NOTE:

DATA OUTLETS ARE RJ45®, WIRED WITH CAT 5 CABLE
EACH DATA OUTLET IS TO BE ROUTED TO A HUB SUPPLIED BY OTHERS

EXIT SIGN/EMERGENCY LIGHT NOTE:

DEVICES ARE US ENERGY TECHNOLOGIES 911-1410 COMBINATION UNITS

SMOKE DETECTOR NOTE:

SMOKE DETECTORS ARE TO BE CONNECTED TO THE EXISTING SYSTEM

NOTICE
This drawing is the property of
Tecton Architects | pc. The use, re-use,
or reproduction of this drawing for
any purpose whatsoever without an
expressed written agreement between
Tecton Architects | pc and the user
is prohibited. Rights to use the
information on this sheet are not
transferred until payment has been
received for services rendered.
Any rights so granted are non-
transferable to other parties without
the prior expressed written consent
of Tecton Architects | pc.

© 2002 Tecton Architects | pc

job progress

FILE NAME: E-2.dwg
REF NAME: Z-HEB000A-A.dwg
JOB NAME:
REF NAME:



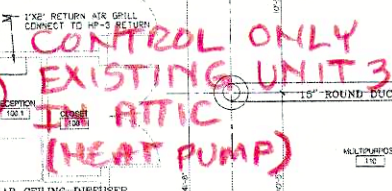
TectonArchitects | pc
ONE HARTFORD SQUARE WEST
HARTFORD, CONNECTICUT
TEL: 860-584-2822
FAX: 860-584-2823
www.tectonarchitects.com



ELECTRICAL: COMMUNICATIONS
AND EMERGENCY SYSTEMS
AHM BUILDING ADDITION
25 PENDELTON DRIVE
HEBRON, CONNECTICUT

Issue date: 10/14/02
scale: AS NOTED
job no.: HEB-06-AR
sheet no.:

EXISTING ELECTRICAL PANELS



EQUIPMENT PLATFORM LAYOUT

M-1

GAS FIRED FURNACE SCHEDULE																						
UNIT	MODEL	TYPE	SUPPLY FAN				GAS HEATING					DX COOLING COIL				ELECTRICAL					ACCESSORIES	
			CFM	OA CFM	ESP IN. W.G.	MOTOR HP	INPUT MBH	OUTPUT MBH	EFF %	FUEL	STAGES	MODEL	NOMINAL TONS	EAT DB/WB	APD	VOLTS	PHASE	HZ	MCA	MOCp		
FURN-1A	59TP6B120V24-22	VERTICAL	3000	600	0.60	1.0	120	115.2	96	PROPANE	2	CAVTCOIL412A00	10.0	81/67	0.60"	120	1	60	12.6	20	ALL	
FURN-1B	59TP6B120V24-22	VERTICAL					120	115.2	96	PROPANE	2					120	1	60	12.6	20	ALL	
FURN-2	59TP6B120V24-22	VERTICAL	1995	360	0.60	1.0	120	115.2	96	PROPANE	2	CNPVP6024ALA	5.0	81/67	0.60"	120	1	60	12.6	20	1-4,6-8,10-11	
NOTES: 1. SELECTIONS BASED ON CARRIER AND ACCEPTABLE APPROVED EQUAL FROM TRANE MODEL S9X2 AND LENNOX MODEL EL296UH110XE60C. 2. COOLING PERFORMANCE IS RATED AT 95° F AMBIENT, PROVIDE R-410 REFRIGERANT. 3. FURNACE 1 IS A TWINED UNIT.							ACCESSORIES: 1. STARTER & DISCONNECT SWITCH. 2. ROOF CONCENTRIC VENT/FLUE KIT. 3. PROGRAMMABLE THERMOSTAT WITH REMOTE TEMPERATURE SENSOR 4. RETURN AIR FILTER SECTION (MERV#8), CONSTANT VOLUME OPERATION 5. SUPPLY & RETURN DUCT SMOKE DETECTORS 6. PROVIDE MOTORIZED OUTSIDE AIR DAMPER & INTERLOCK WITH UNIT 7. DX COIL WITH TXV AND PIPING							8. PIPE IN CONDENSATE NEUTRALIZING TUBE, MODEL JM-2, MANUFACTURED BY JJM BOILER WORKS 9. HOT GAS BYPASS AND CONTROLS 10. CONDENSATE PUMP WITH SECONDARY DRAIN PAN UNDER UNIT. LEAK DETECTION IN SECONDARY DRAIN PAN TO DISABLE UNIT OPERATION ON SENSING WATER 11. PROVIDE MOUNTING HARDWARE FOR VERTICAL INSTALLATION, INCLUDE VIBRATION ISOLATORS								

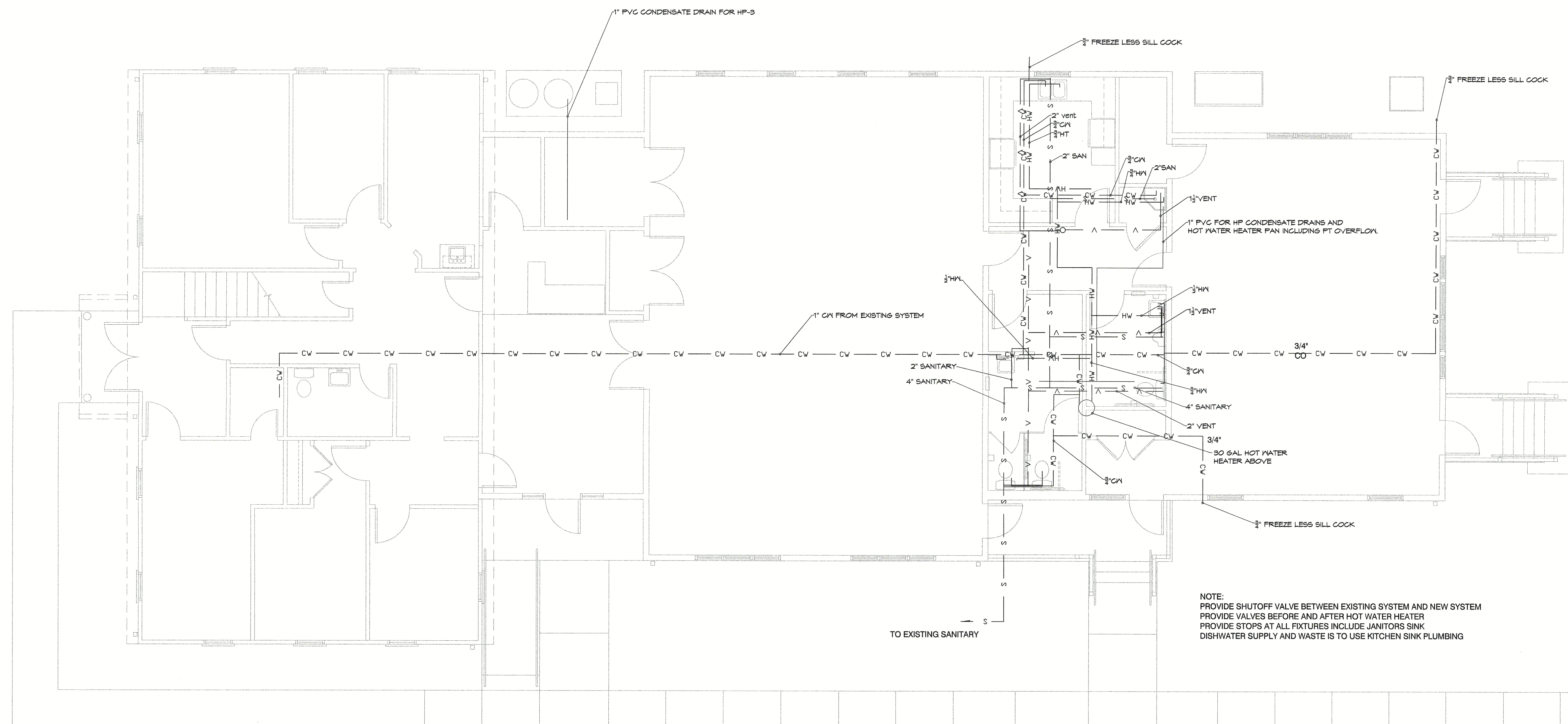
HVAC TAGS	
FURN	FURNACE
CU	CONDENSING UNIT
B	BOILER
P	PUMP
EUH	ELECTRIC UNIT HEATER
FD	FIRE DAMPER
CFM	CUBIC FEET PER MINUTE
SA	SUPPLY AIR
RA	RETURN AIR
OA	OUTSIDE AIR
EA	EXHAUST AIR
DN	DOWN
ETR	EXISTING TO REMAIN

AIR COOLED CONDENSING UNIT SCHEDULE												
UNIT	SERVING	MODEL	TONS	COMPRESSORS	SEER	STAGES	ELECTRICAL					ACCESSORIES
							MCA	MOCp	VOLTS	PHASE	HZ	
CU-1	FURN 1	38AUDB12A0A5-0A0CO	10	2	15.0	2	39.0	50	208	3	60	ALL
CU-2	FURN 2	24ACC660B003	5	1	16.0	1	32.4	50	208	1	60	ALL
NOTES: 1. SELECTIONS BASED ON CARRIER AND ACCEPTABLE APPROVED EQUAL FROM TRANE: MODEL 5T: 4TTA4060A3000A, 10T: TTA120E3 AND LENNOX: MODEL 5T: 14ACX-060, 10T ELS120S4ST1Y			ACCESSORIES: 1. STARTER AND DISCONNECT 2. SUCTION & DISCHARGE SERVICE VALVES 3. HIGH & LOW PRESSURE SAFETY SWITCHES 4. LIQUID LINE FILTER DYER WITH STRAINER 5. LOW AMBIENT CONTROLLER & PRESSURE SWITCH KITS 6. HOT GAS BYPASS AND CONTROLS					7. TXV VALVE & DX PIPING TO FURNACES 8. CRANKCASE HEATER 9. COMPRESSOR START ASSIST 10. CYCLE PROTECTOR 11. TIME DELAY RELAY 12. SUPPORT FEET 13. EVAPORATOR FREEZE THERMOSTAT				

ELECTRIC UNIT HEATER SCHEDULE									
TAG	MODEL	TYPE	CFM	WATTS	MBH	VOLTAGE	AMPS	PHASE	ACCESSORIES
EUH-A	EUH03B11T	UNIT	200	3000	10.2	120	25.0	1	ALL
<div>NOTES: 1. UNIT SELECTION BASED ON DIMPLEX.</div> <div>ACCESSORIES: 1. DISCONNECT SWITCH, INTERNAL THERMOSTAT 2. THERMAL PROTECTION 3. MOUNTING FRAME AND HARDWARE.</div>									

1

REV: 1 DATED: 1-16-23 DESCRIPTION: ADDENDUM #1	project name:	AHM BUILDING 25 PENDLETON DRIVE, HEBRON, CT			<div>PROGRESSIVE ENGINEERING, INC</div> 290 BURNSIDE AVE., EAST HARTFORD, CT 06108 TEL: 860.895.8385 FAX: 860.895.8386		
	drawing title:	CONVERSION TO FURNACES MECHANICAL SCHEDULES			date: 12/09/22	project no.: 22063	drawing no.: M-2
	drawn by:				rev no.:	scale:	



PLUMBING PLAN

NOTICE
This drawing is the property of
Tecton Architects | pc. The use, re-use,
or reproduction of this drawing for
any purpose whatsoever without an
expressed written agreement between
Tecton Architects | pc and the user
is prohibited. Rights to use the
information on this sheet are not
transferred until payment has been
received for services rendered.
All rights are reserved and are not
transferable to other parties without
the prior expressed written consent
of Tecton Architects | pc.

© 2002 Tecton Architects | pc