

TOWN OF HEBRON

Martin Road Improvements

Wednesday, January 28, 2026

SCOPE OF PROJECT

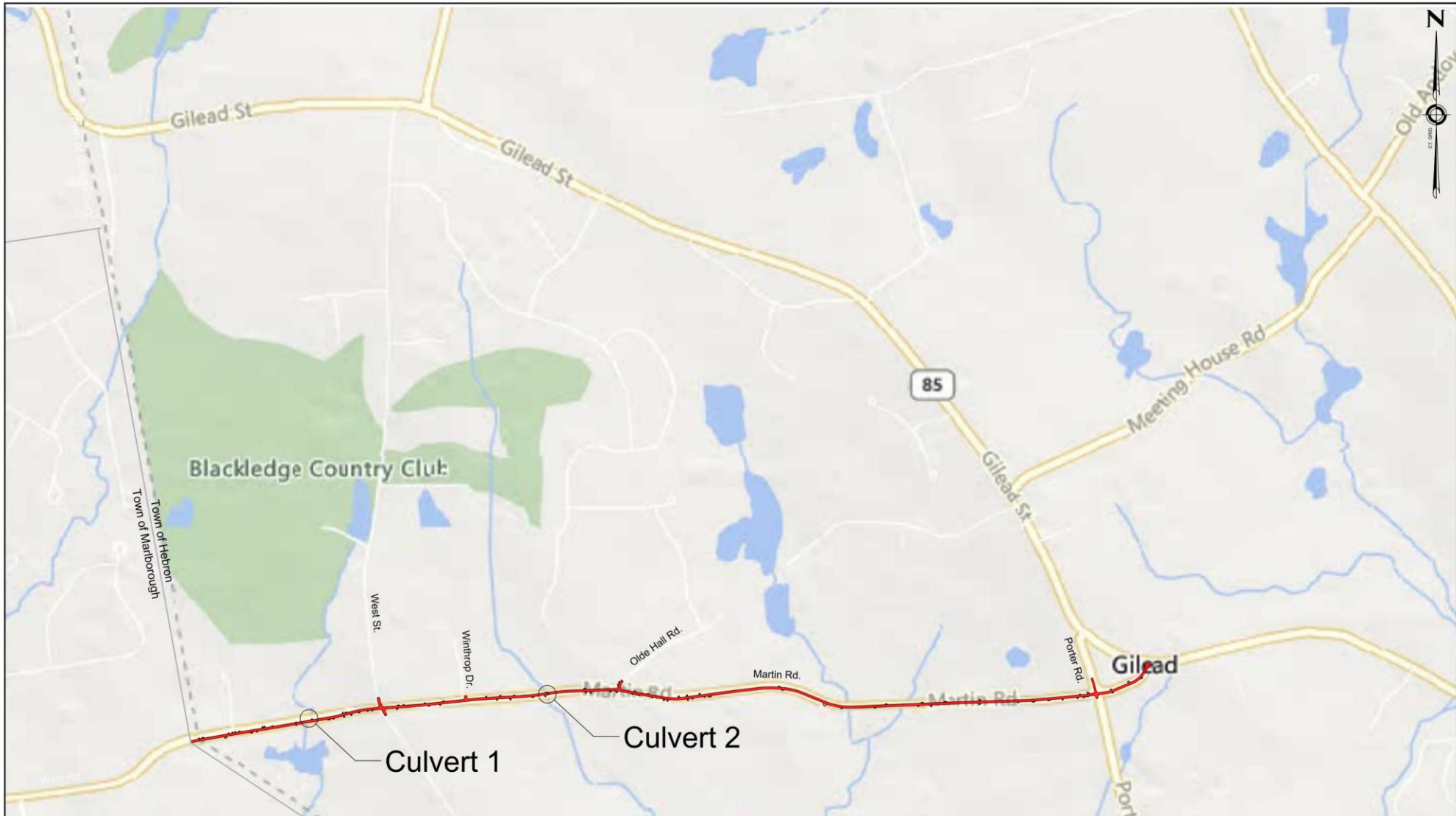
- Roadway Improvements - 2.2 Miles From Route 85 To Marlborough
Town Line
- Layout Modifications of Two Intersections
- Replacement of Two Major Culverts
- Drainage Improvements

OVERVIEW OF PRESENTATION

- Current Project Status
- Funding
- Existing roadway
- Project need
- Proposed Roadway Improvements
- Intersection Redesign
- Culvert Replacements
- Construction
- Question/Comments

PROJECT FUNDING

- Local Transportation Capital Improvements Program (LOTICIP)
- Grant Awarded in the amount of \$3,946,800 (Increased from \$2,984,400)
- Administered by Capital Region Council of Governments
- Funding covers 100% of Construction and Construction Inspection Costs

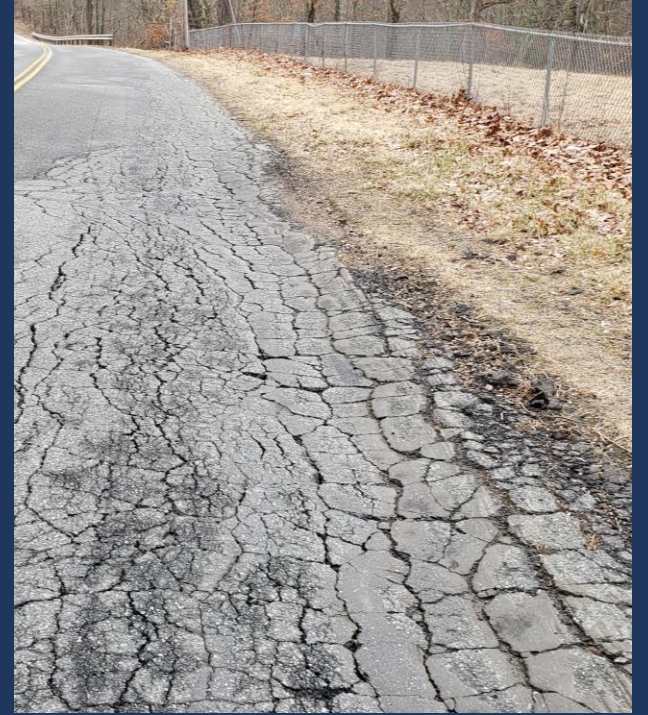


Town of Hebron, Connecticut
**MARTIN ROAD IMPROVEMENTS
 PROJECT OVERVIEW**



EXISTING ROADWAY

- Road extends from Gilead Street (Rte. 85) to Marlborough Town Line
- Intersects Five Roads – Porter Road, Hearthstone Drive, Olde Hall Road, Winthrop Drive, and West Street
- Varying Road Widths
- Approximately 17 Culverts Cross Road within Project Limits
- 35 MPH Posted Speed Limit
- Approximately 1,600 Average Annual Daily Traffic (AADT)
- Existing Right of Way is Approximately 66 Feet



Poor Roadway Surface Condition

PROJECT NEED



PROJECT NEED

Varying Widths and Roadway Crown





Undersized and Failing Culverts

PROJECT NEED



Inadequate Guiderail

PROJECT NEED



PROJECT NEED

Needed Intersection
Improvements





PROJECT NEED

Poor roadway Drainage

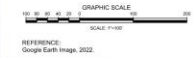


PROPOSED ROADWAY IMPROVEMENTS

- Horizontal & Vertical Alignment
- Road Width
- Method of Repair
- Guiderail Improvements
- Storm Drainage Improvements
- Intersection Redesign
- Culvert Replacements



Town of Hebron, Connecticut
**MARTIN ROAD
IMPROVEMENTS
ROADWAY PLAN**



 Nathan L. Jacobson & Associates, Inc.
16 Main Street, P.O. Box 337
Chester, Connecticut 06412-0337
Tel: (860) 526-9591 Fax: (860) 526-5416
www.nja.com
JACOBSON Consulting Civil and Environmental Engineers Since 1972



Town of Hebron, Connecticut
MARTIN ROAD IMPROVEMENTS
WEST STREET INTERSECTION

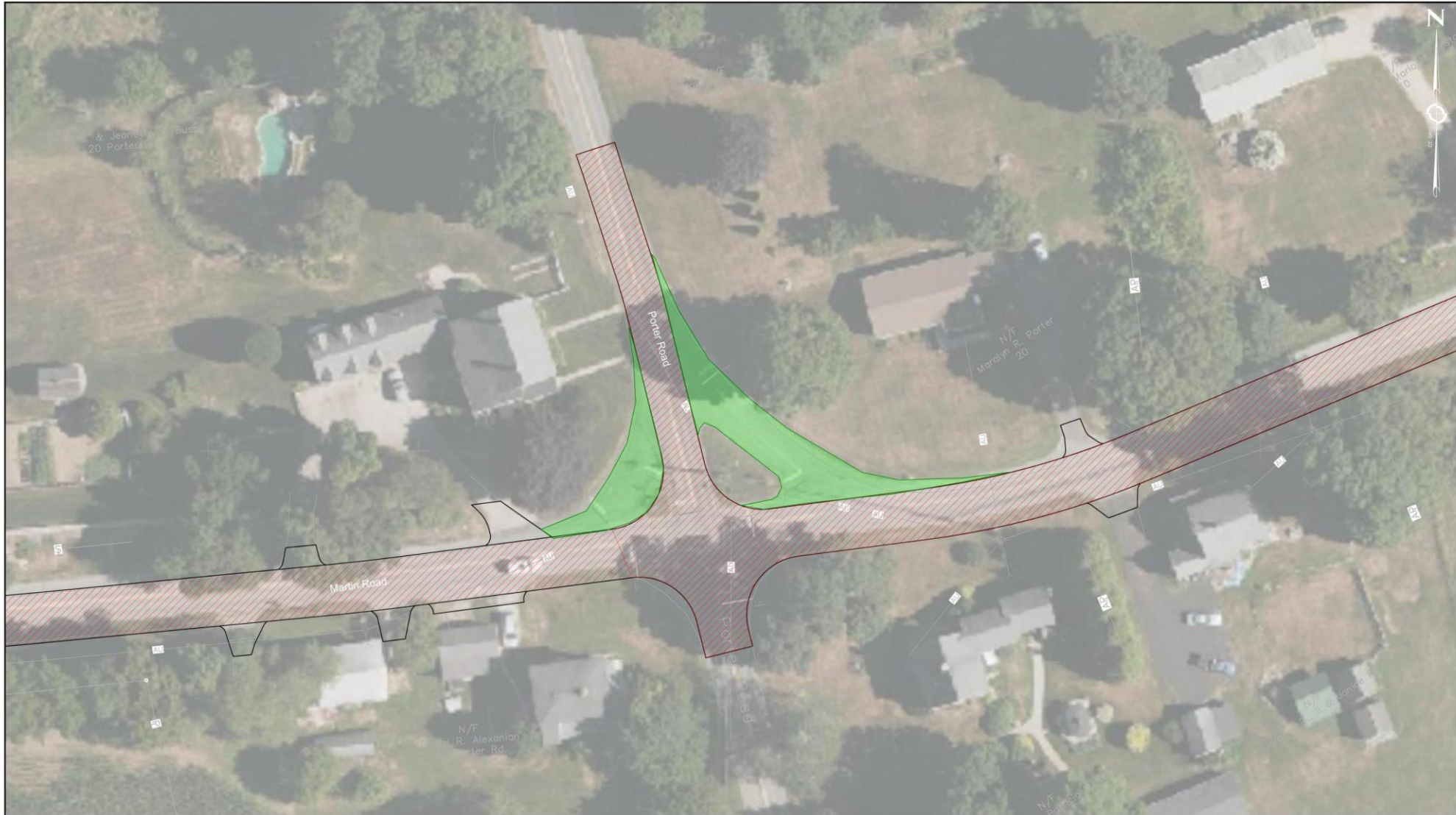


Nathan L. Jacobson & Associates, Inc.
86 Main Street, P.O. Box 337
Chester, Connecticut 06412-0337
Tel: (860) 526-9591 Fax: (860) 526-5416
www.nja.com
JACOBS&A Consulting Civil and Environmental Engineers Since 1972



Town of Hebron, Connecticut
MARTIN ROAD IMPROVEMENTS
OLDE HALL ROAD INTERSECTION





Town of Hebron, Connecticut
MARTIN ROAD IMPROVEMENTS
PORTER ROAD INTERSECTION



N Nathan L. Jacobson & Associates, Inc.
85 Main Street, P.O. Box 337
Chester, Connecticut 06412-0337
Tel: (860) 526-9591 Fax: (860) 526-5416
www.nja.com
Jacobson Consulting Civil and Environmental Engineers Since 1972



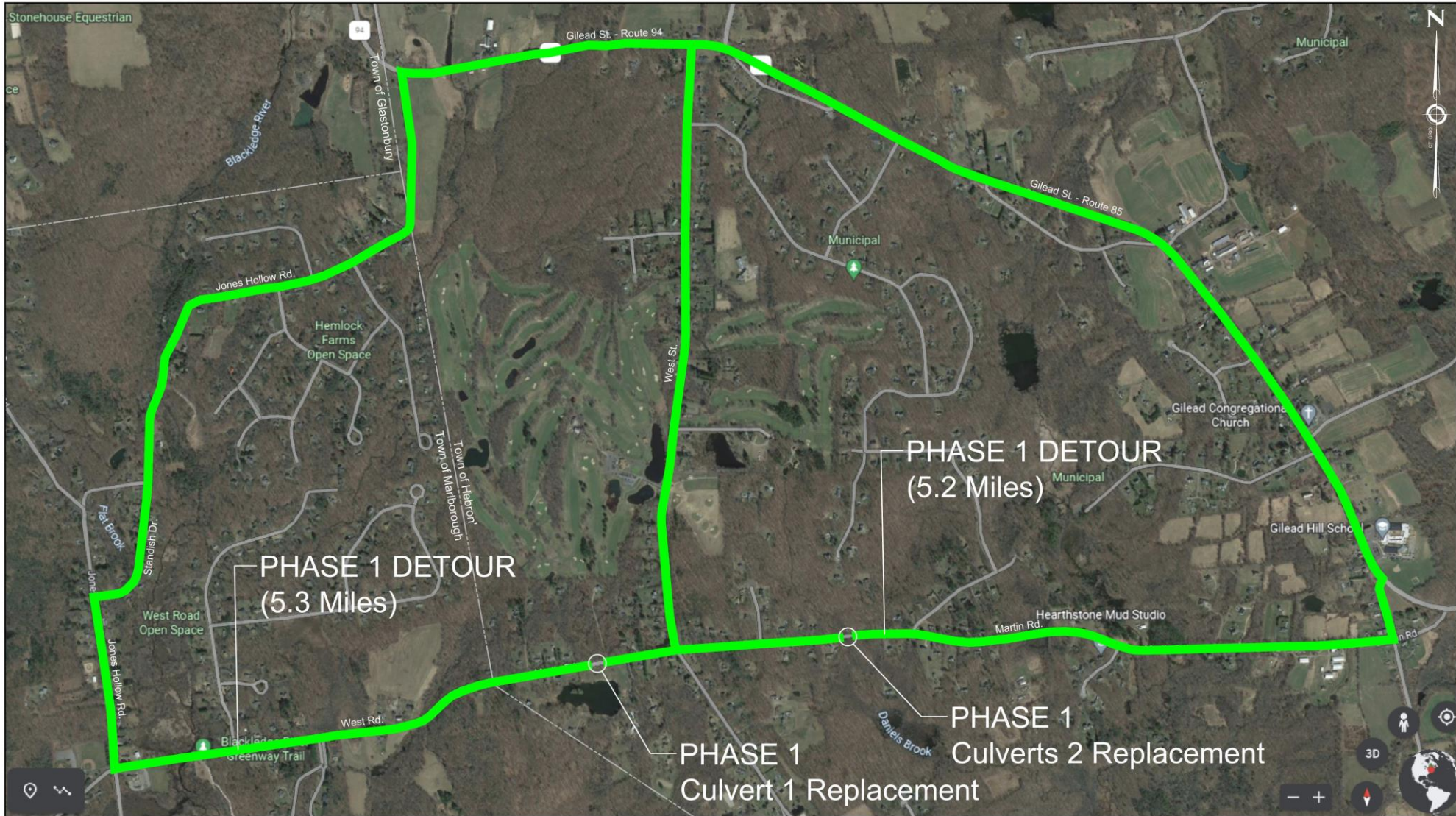
Town of Hebron, Connecticut
MARTIN ROAD IMPROVEMENTS
PORTER ROAD INTERSECTION



J Nathan L. Jacobson & Associates, Inc.
85 Main Street, P.O. Box 337
Cheshire, Connecticut 06412-0337
Tel: (860) 526-9591 Fax: (860) 526-5416
www.nja.com
Jacobson Consulting Civil and Environmental Engineers Since 1972

CONSTRUCTION

- Phasing
- Detour Routes
- Road Closures
- Duration

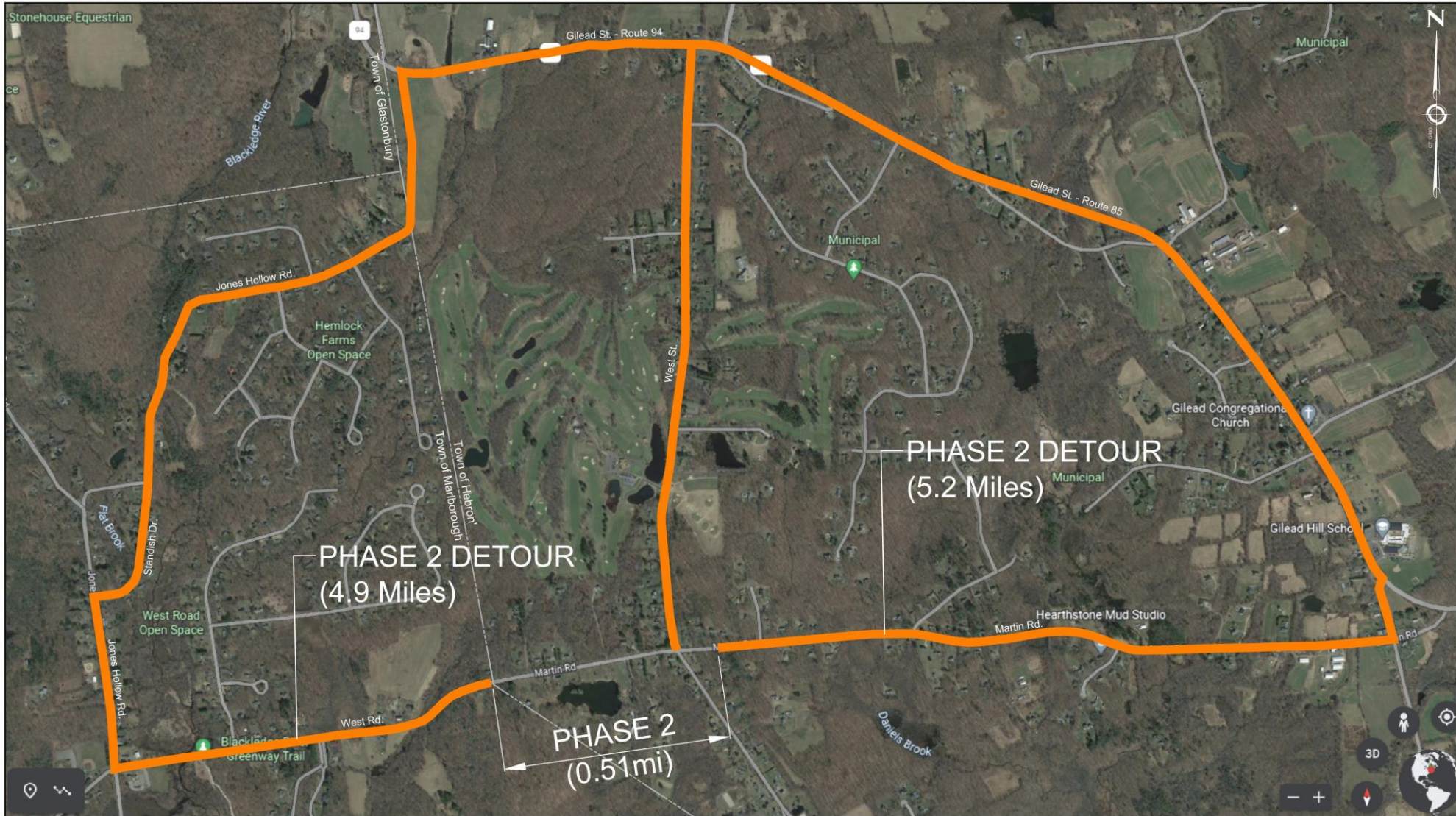


Town of Hebron, Connecticut
MARTIN ROAD IMPROVEMENTS
PHASE 1 DETOUR PLAN



REFERENCE:
 Google Earth Image, 2022.

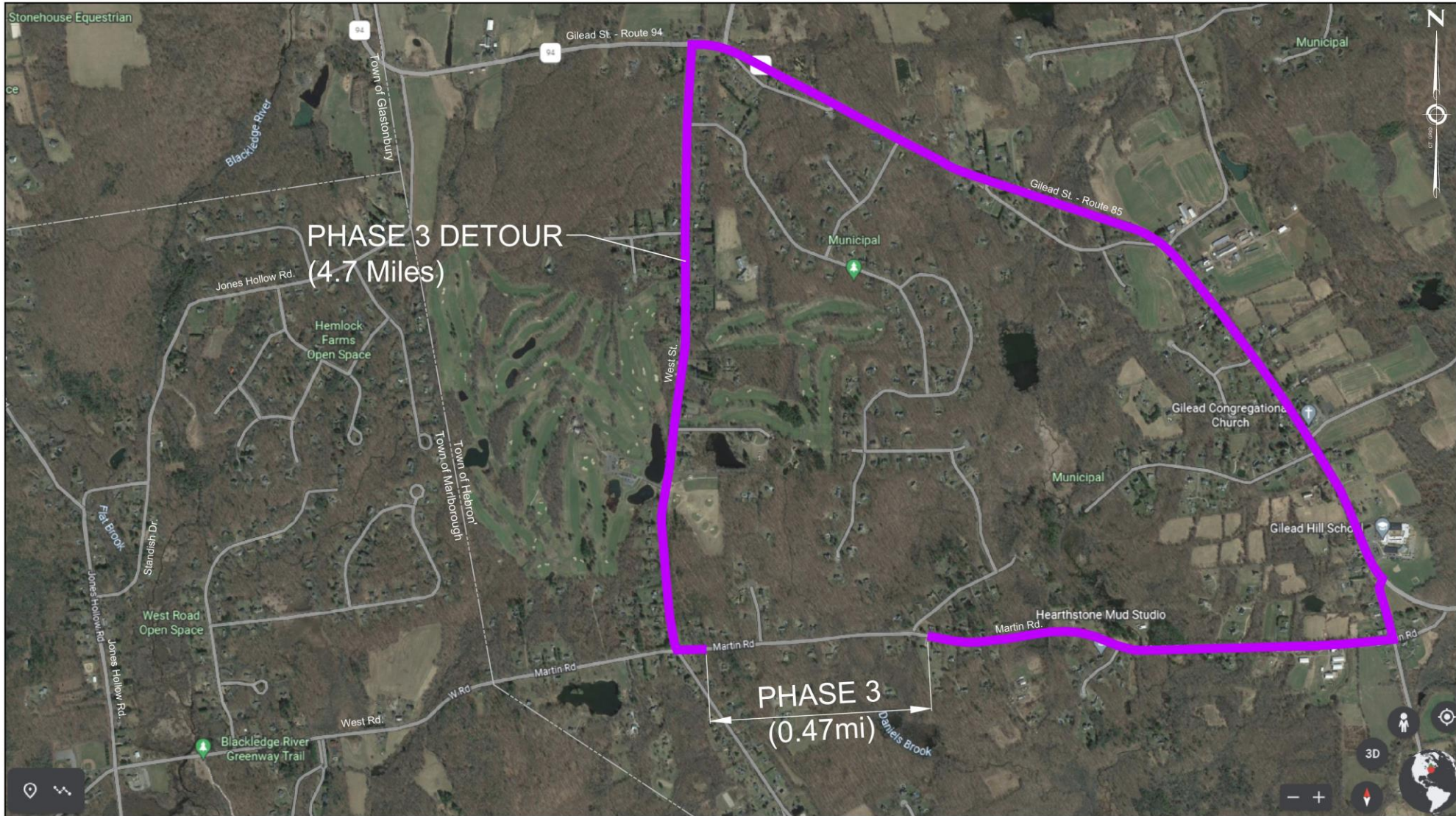
Nathan L. Jacobson & Associates, Inc.
 85 Main Street, P.O. Box 337
 Chester, Connecticut 06412-0337
 Tel: (860) 526-9591 Fax: (860) 526-5416
 www.nlj.com
JACOBSON Consulting Civil and Environmental Engineers Since 1972



Town of Hebron, Connecticut
**MARTIN ROAD IMPROVEMENTS
 PHASE 2 DETOUR PLAN**



REFERENCE:
 Google Earth Image, 2022.

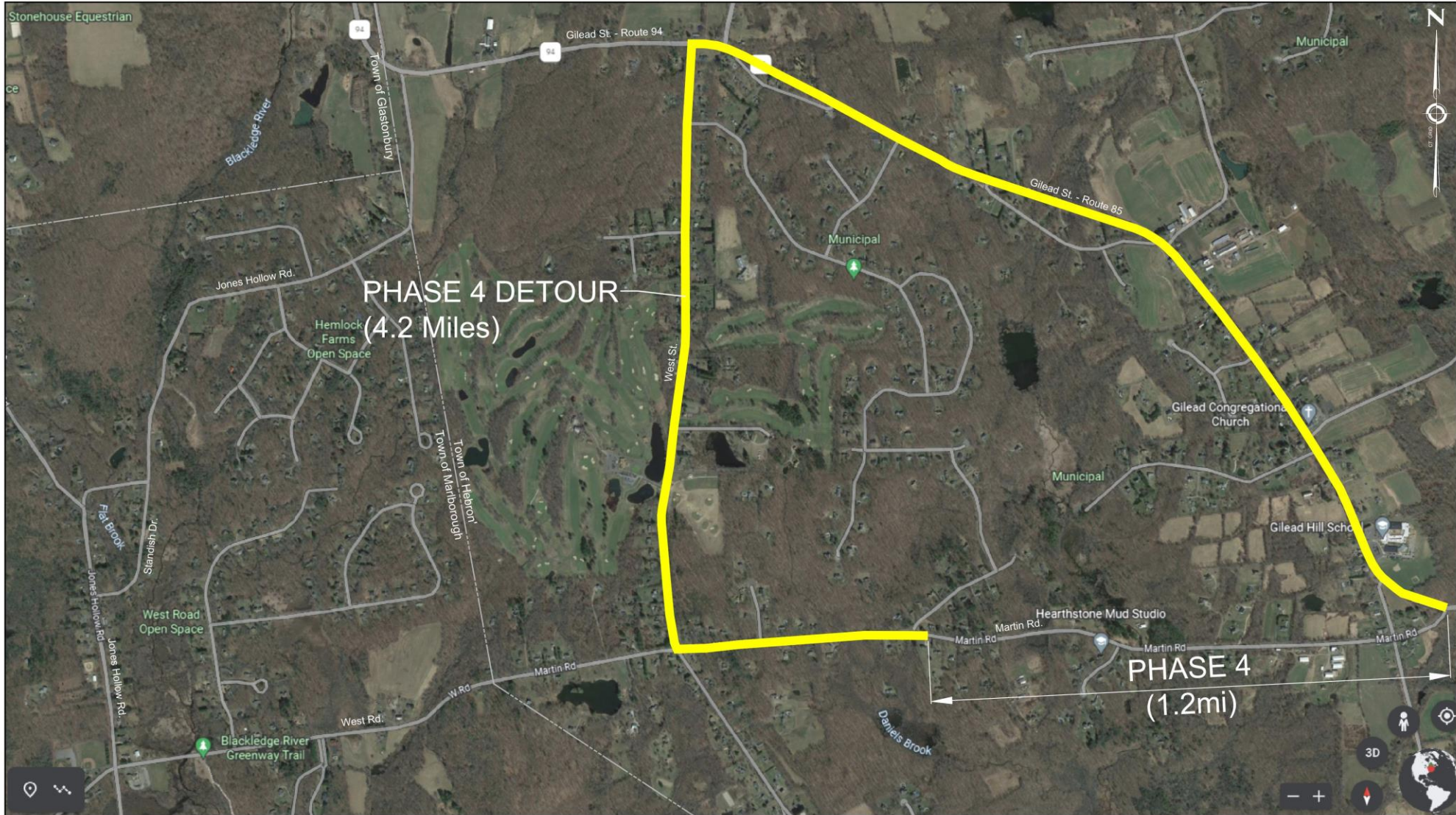


Town of Hebron, Connecticut
**MARTIN ROAD IMPROVEMENTS
 PHASE 3 DETOUR PLAN**

GRAPHIC SCALE
 SCALE: 1"=500'

REFERENCE:
 Google Earth Image, 2022.

J Nathan L. Jacobson & Associates, Inc.
 86 Main Street, P.O. Box 337
 Chester, Connecticut 06412-0337
 Tel: (860) 526-9591 Fax: (860) 526-5416
 www.nlji.com
 JACOBSON Consulting Civil and Environmental Engineers Since 1972



PHASE 4 DETOUR
(4.2 Miles)

PHASE 4
(1.2mi)

Town of Hebron, Connecticut
MARTIN ROAD IMPROVEMENTS
PHASE 4 DETOUR PLAN

GRAPHIC SCALE
 SCALE: 1"=500'

REFERENCE:
 Google Earth Image, 2022.

J Nathan L. Jacobson & Associates, Inc.
 85 Main Street, P.O. Box 337
 Chester, Connecticut 06412-0337
 Tel: (860) 526-9591 Fax: (860) 526-5416
 www.nja.com
 JACOBSON Consulting Civil and Environmental Engineers Since 1972

QUESTIONS/COMMENTS